

# HIFOUNE



# HIFOUNE

**XIAMEN HIFOUNE MACHINERY CO.,LTD.**

ADDRESS: Torch High-Tech Zone (Xiang'an) Industrial Park,Xiamen

TEL:+86 0592 7820328

Email: kevin@hifoune.com

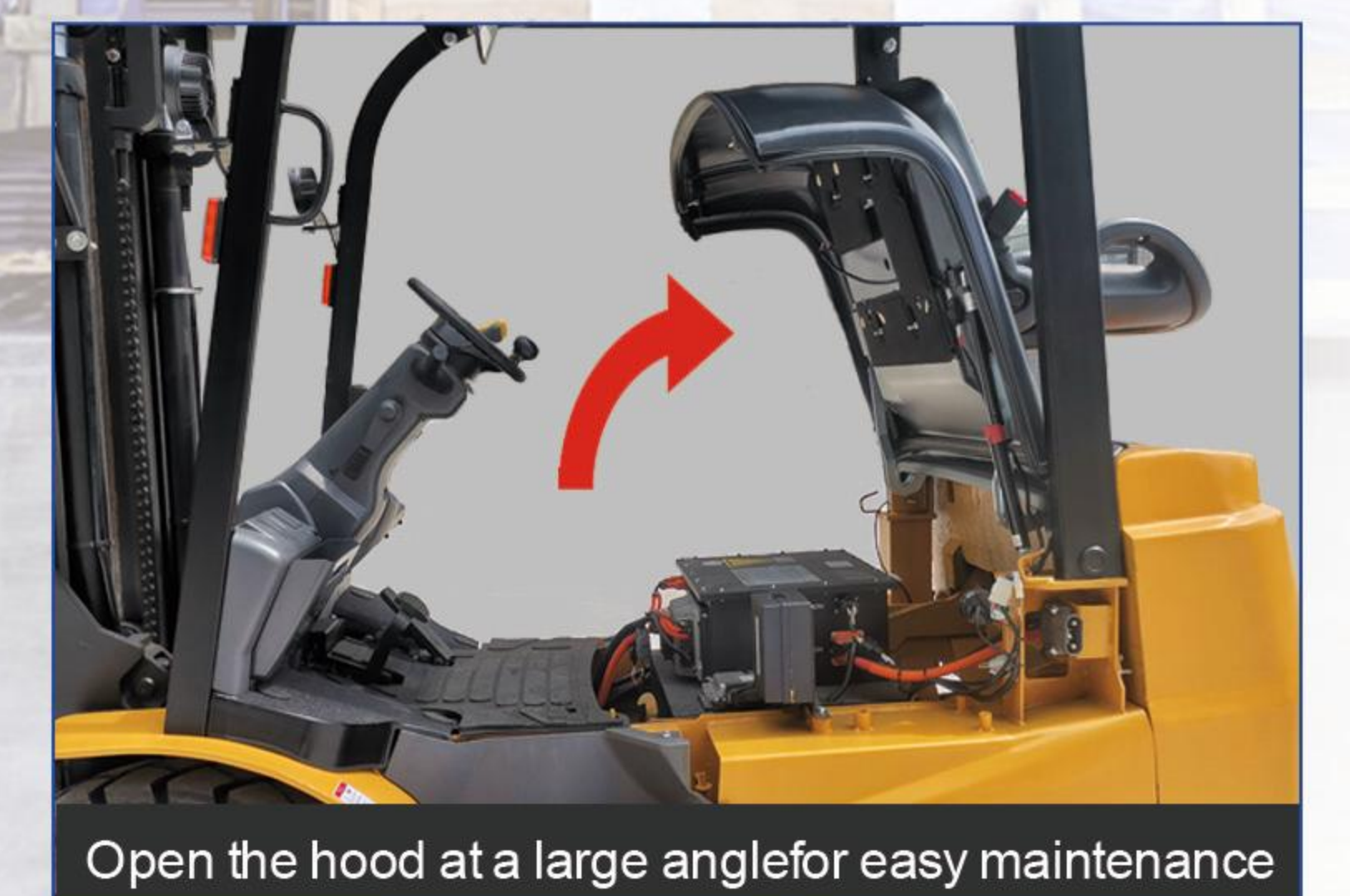
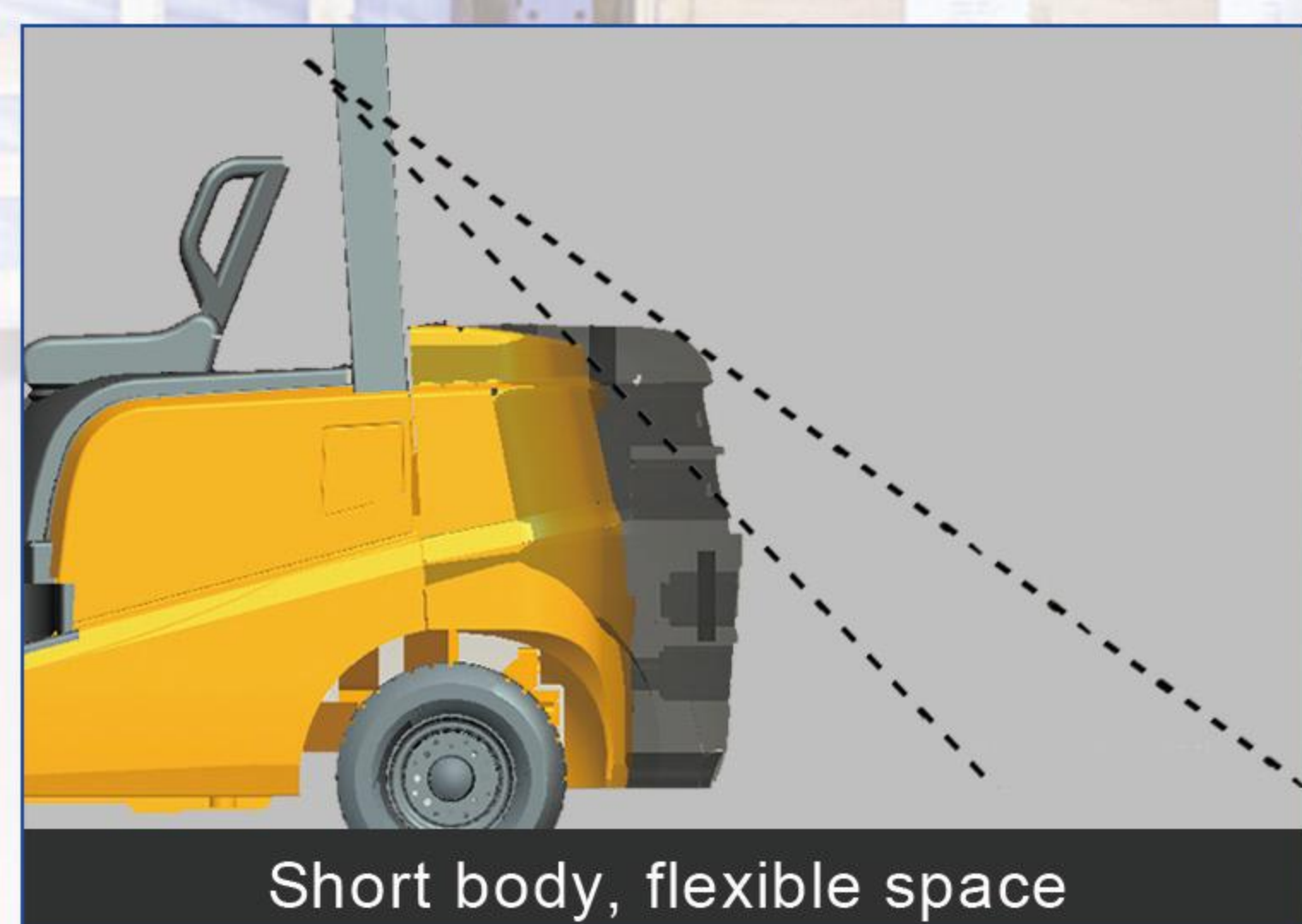
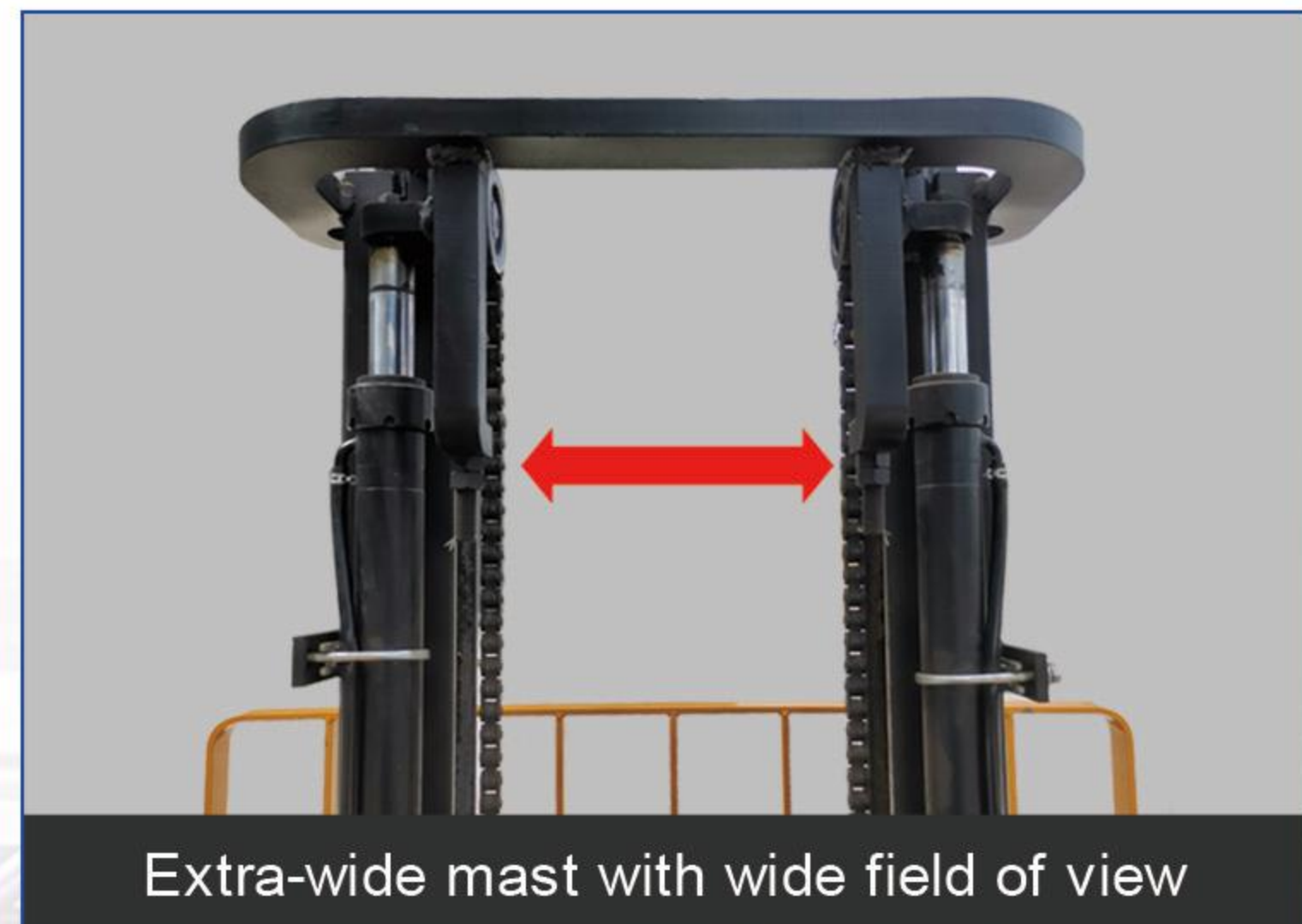
www.hifouneforklift.com




**LITHIUM BATTERY** **FBL 20/25/30/35**  
**COUNTER BALANCED FORKLIFT**



-   
fast charging
-   
charge and use
-   
Powerful
-   
EP
-   
maintenance free
-   
safe
-   
zero emission
-   
adapt to extreme temp

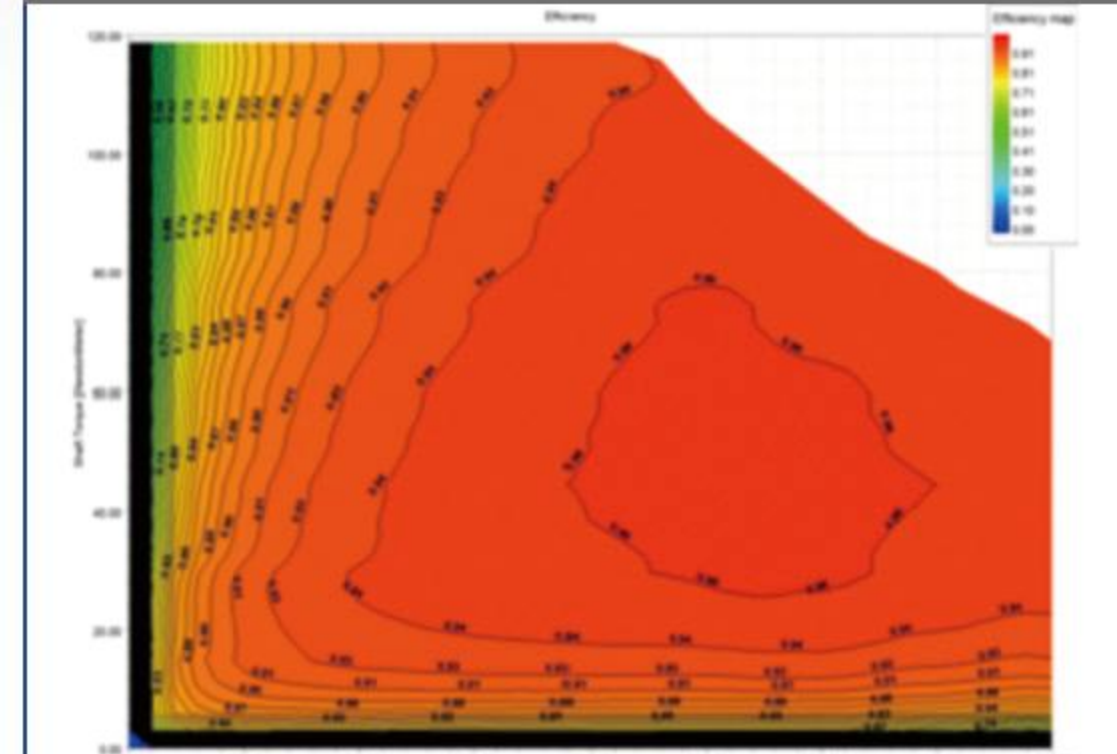


### Intelligent wake-up system



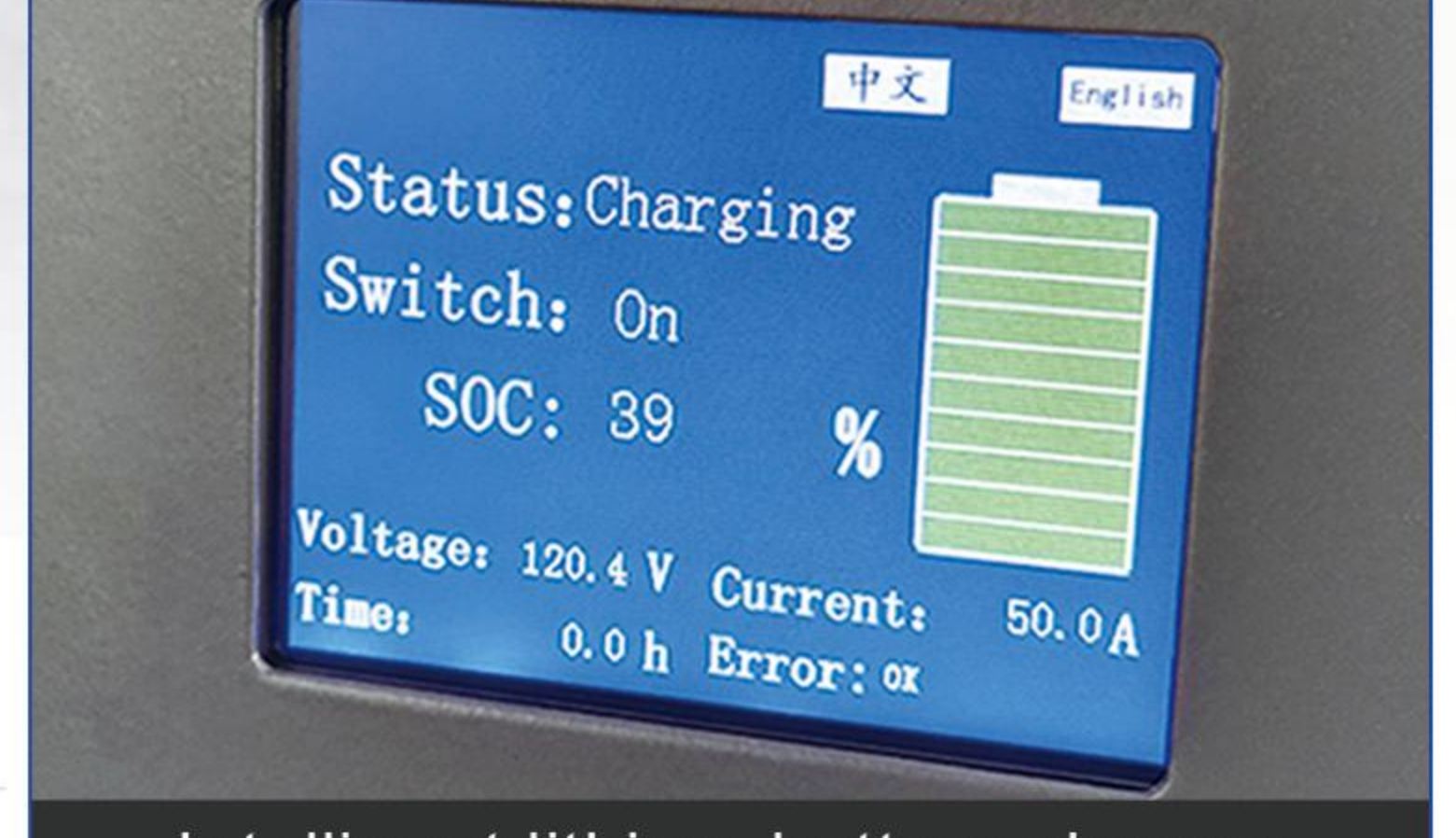
- \* System self-inspection to ensure that all parts meet the working conditions before starting the forklift
- \* Completely cut off the lithium battery power supply to avoid lithium battery power loss due to long-term storage

### Adopt permanent magnet motor



- \* Reduce copper consumption, reduce motor electromagnetic noise, improve heat dissipation performance,
- \* High space utilization rate, and increase overall efficiency by 20%

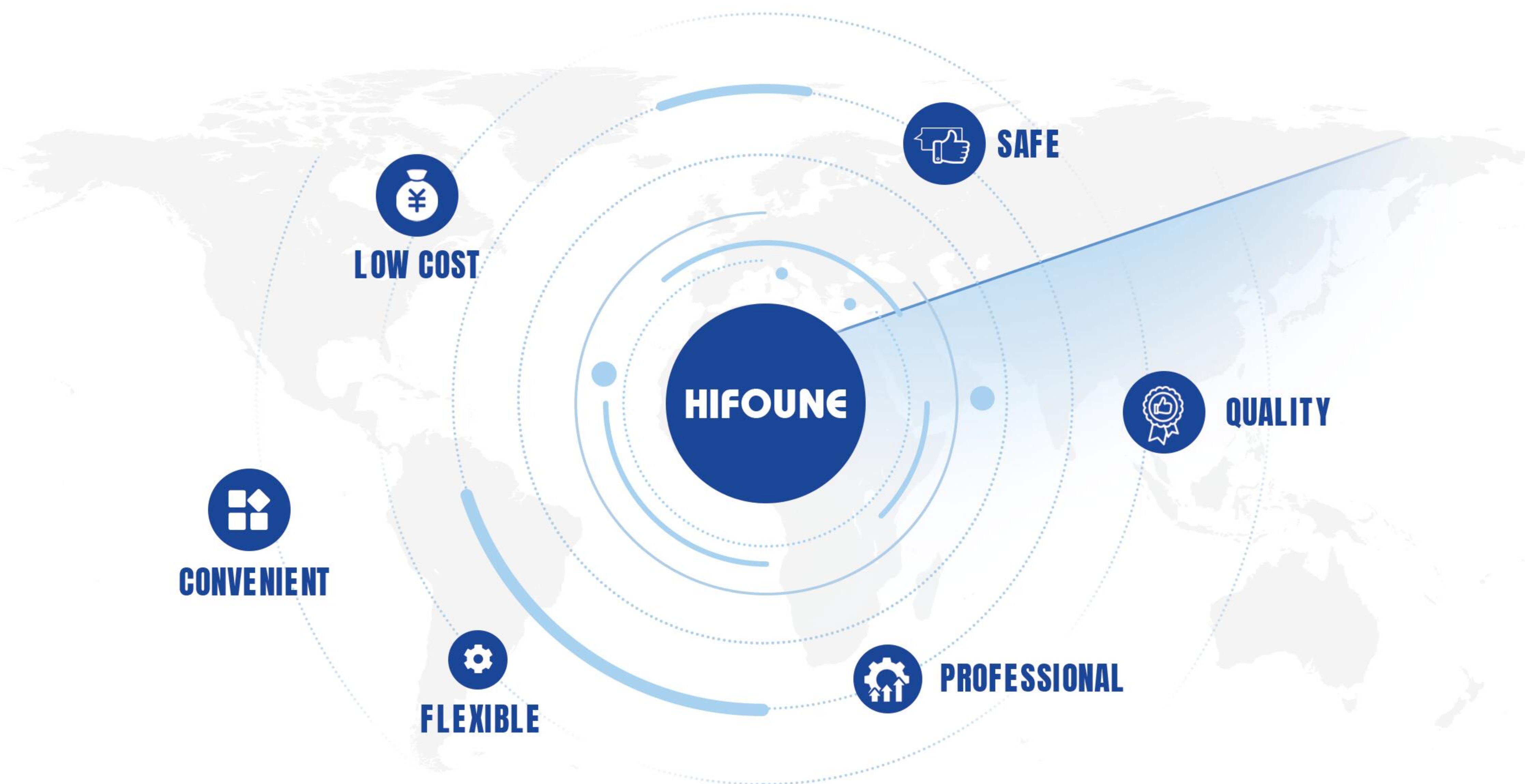
### Intelligent lithium battery charger



Status: Charging  
 Switch: On  
 SOC: 39 %  
 Voltage: 120.4 V Current: 50.0 A  
 Time: 0.0 h Error: α

# COMPANY PROFILE

Xiamen Hifoune Machinery Co., Ltd. is located in Xiang'an Industrial Zone, Torch High-tech Zone, Xiamen City. It focuses on providing customers with reliable and efficient material handling equipment and solutions. It is a professional company integrating R&D, manufacturing, sales and service.



## MAIN PRODUCTS

It include a full range of counterbalanced internal combustion forklifts, counterbalanced electric forklifts and electric storage forklifts. We pursue to provide customers with high-quality products in the full range of products, and to provide customers with considerate services in all aspects.

## DISTRIBUTION OF AGENTS

Our current products have been sold to 74 countries and regions around the world. We have not only established numerous agency channels , but also have stable agents in mature markets such as Europe and North America. Our products and services are getting more and more recognition and acceptance.

## LITHIUM BATTERY COUNTER BALANCED FORKLIFT FBL 20/25/30/35

Electric forklift parameters table								
Content	No.	Projects	Unit	Xiamen Hifoune Technology Co., Ltd				
	2	Model	-	FBL20	FBL25	FBL30	FBL35	
	3	Power mode	-	Lithium Iron Phosphate battery				
	5	Load capacity	Q(Kg)	2000	2500	3000	3500	
	6	Load center	C(mm)	500	500	500	500	
	7	Max.lifting height	h4 (mm)	3000	3000	3000	3000	
	<b>Weight</b>	8	Self-weight	kg	3590	3810	4110	4410
		9	Battery weight	kg	154	154	180	180
<b>Size</b>	10	Front overhang	x (mm)	470	470	475	475	
	11	Wheelbase	y (mm)	1550	1550	1650	1650	
	12	Mast tilting angle (fwd/bwd)	$\alpha/\beta$ (°)	6/12	6/12	6/12	6/12	
	13	Mast height(fork lowered)	mm	2080	2080	2140	2140	
	14	Free lifting height	mm	140	140	145	145	
	15	Max.lifting height	mm	4040	4040	4135	4135	
	16	Overhead guard height	mm	2125	2125	2150	2150	
	18	Overall length(without fork)	h1 (mm)	2240	2290	2490	2540	
	19	Overall width	b1 (mm)	1160	1160	1220	1220	
	20	Fork size:thickness*width*length	mm	1220X122X40	1220X122X40	1220X125X45	1220X125X50	
	21	Min. ground clearance (mast)	m1 (mm)	130	130	140	140	
	23	Min. turning radius	Wa (mm)	2045	2090	2240	2295	
	<b>Tires</b>	24	Tire type	-	pneumatic tire	pneumatic tire	pneumatic tire	pneumatic tire/Solid tire
25		Tire number (X=driving tire)	-	2x/2	2x/2	2x/2	2x/2	
26		Front tire	-	7.00-12-12PR	7.00-12-12PR	28X9-15-14PR	28X9-15-14PR	
27		Rear tire	-	18X7-8-14PR	18X7-8-14PR	18X7-8-14PR	18X7-8	
<b>Performance</b>	28	Travelling speed (loaded/unloaded)	Km/h	16/16	16/16	15/15	15/15	
	29	Lifting speed (loaded/unloaded)	mm/s	300/440	300/440	290/460	275/460	
	30	Max.drawbar pull(load/unloaded)	kN	22/21	21.5/20.5	20.5/19.5	19.5/18	
	31	Max.gradeability (loaded/unloaded)	%	15/15	15/15	15/15	15/15	
<b>System</b>	32	Travelling motor power	KW	15.0AC	15.0AC	15.0AC	15.0AC	
	33	Working motor power	KW	15.0AC	15.0AC	15.0AC	15.0AC	
	34	Battery (voltage/capacity)	V/Ah	115/125	115/125	115/173	115/173	

The standard model data would vary according to the configuration.

