

# HIFOUNE



# HIFOUNE

**XIAMEN HIFOUNE MACHINERY CO.,LTD.**

ADDRESS: Torch High-Tech Zone (Xiang'an) Industrial Park,Xiamen

TEL:+86 0592 7820328

Email: kevin@hifoune.com

www.hifouneforklift.com



## NEW C SERIES I.C. FORKLIFT





Comfortably



Flexibility



Powerful



EP



Maintenance free



Safe



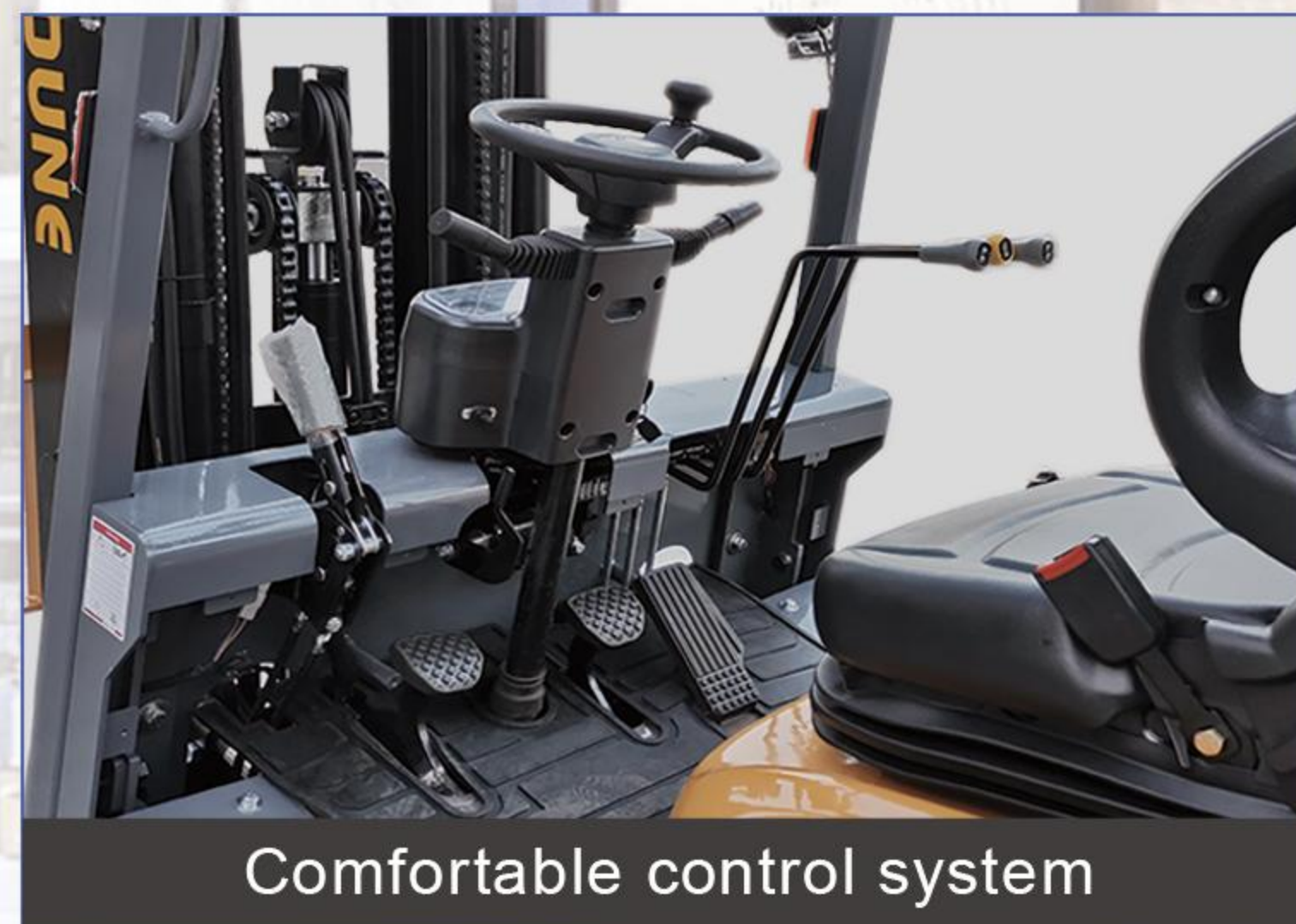
Stabilisation



Artistic



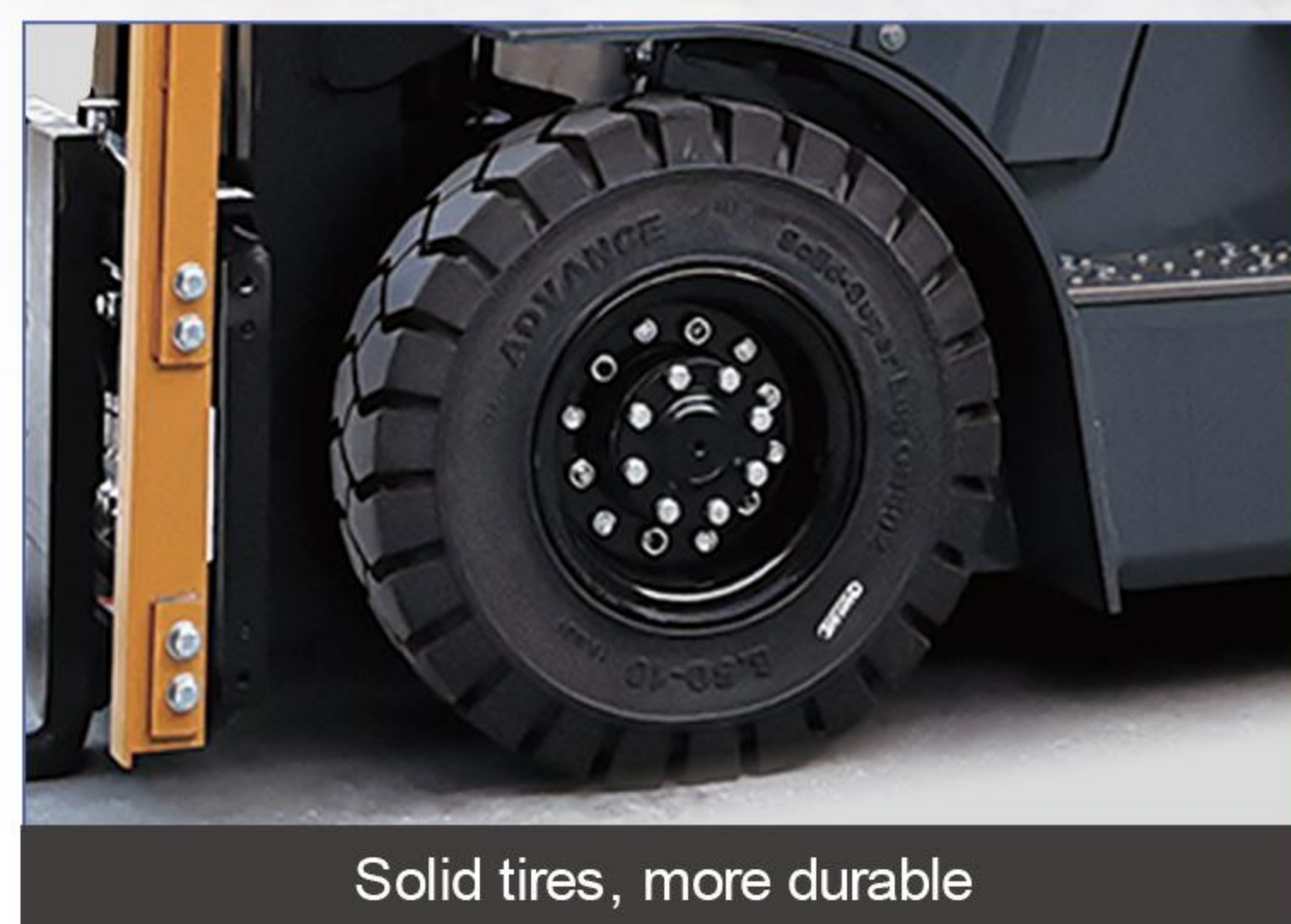
Suspension seat



Comfortable control system



Improve the comfort of the driving space



Solid tires, more durable



New air filter, more powerful engine



Three stage wide view mast



High-strength overhead guard, higher safety



Smaller turning radius and better passability



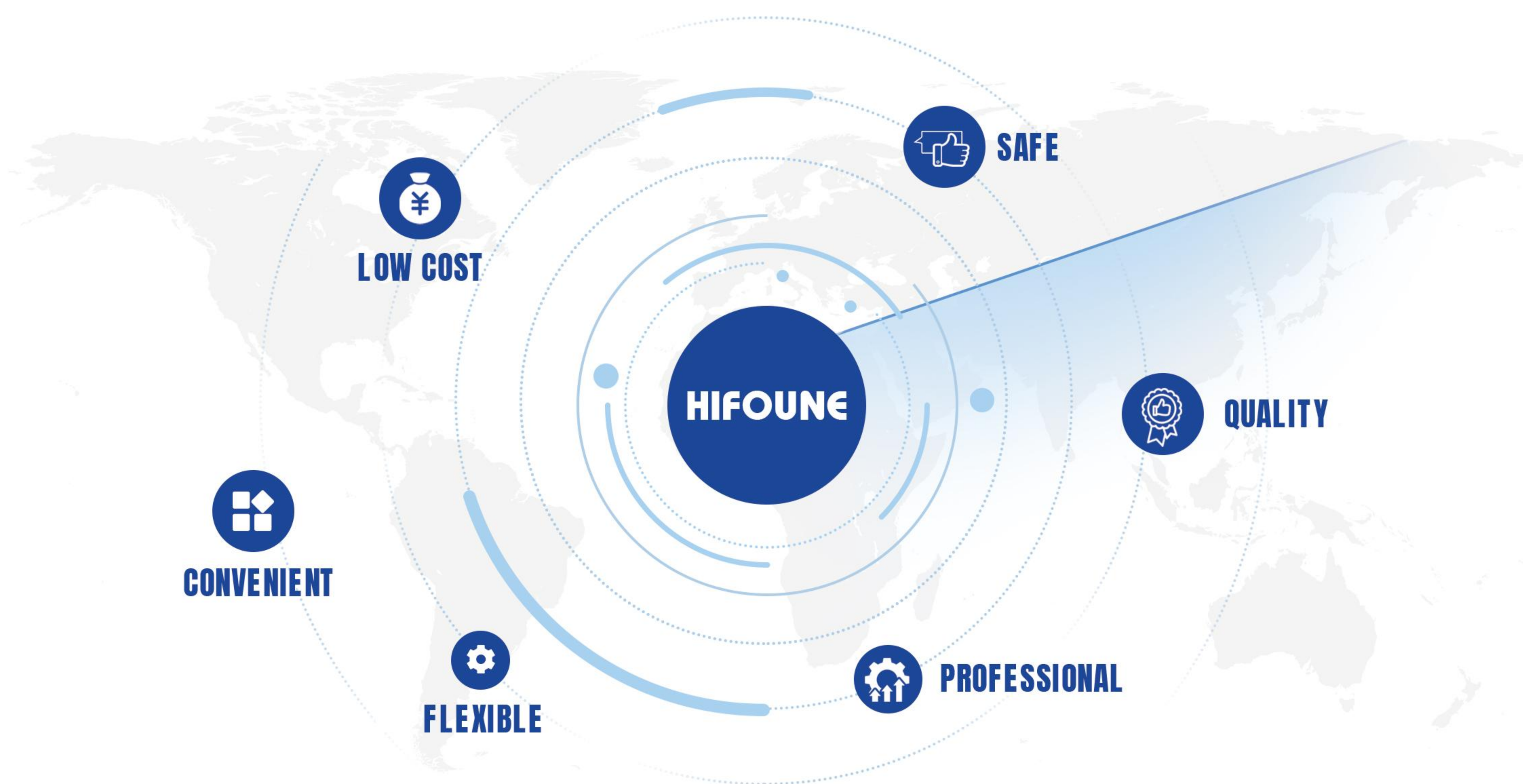
Nissan engine, more environmentally friendly



Double hole type is conducive to vehicle heat dissipation

# COMPANY PROFILE

Xiamen Hifoune Machinery Co., Ltd. is located in Xiang'an Industrial Zone, Torch High-tech Zone, Xiamen City. It focuses on providing customers with reliable and efficient material handling equipment and solutions. It is a professional company integrating R&D, manufacturing, sales and service.



## MAIN PRODUCTS

It include a full range of counterbalanced internal combustion forklifts, counterbalanced electric forklifts and electric storage forklifts. We pursue to provide customers with high-quality products in the full range of products, and to provide customers with considerate services in all aspects.

## DISTRIBUTION OF AGENTS

Our current products have been sold to 74 countries and regions around the world. We have not only established numerous agency channels , but also have stable agents in mature markets such as Europe and North America. Our products and services are getting more and more recognition and acceptance.

## NEW C SERIES I.C. FORKLIFT FD15/18 FG15/18

Manufacturer						
Model	UNIT	FD15	FD18	FG15	FG18	
Specifications	Power Unit		Diesel	Diesel	LPG/Gasoline	LPG/Gasoline
	Operator Type		Driver/seat	Driver/seat	Driver/seat	Driver/seat
	Transimission Box Type		Electronic hydraulic transmisson	Electronic hydraulic transmisson	Electronic hydraulic transmisson	Electronic hydraulic transmisson
	Rated Capacity	Kg	1500	1800	1500	1800
	Load Center	mm	500	500	500	500
	Max.Lifting Height	mm	3000	3000	3000	3000
	Tire Type		Pneumatic Tyre	Pneumatic Tyre	Pneumatic Tyre	Pneumatic Tyre
	Tire Number(Front/Rear)		2/2	2/2	2/2	2/2
	Tire Size(Front/Rear)		6.50-10-10PR/5.00-8-10PR	6.50-10-10PR/5.00-8-10PR	6.50-10-10PR/5.00-8-10PR	6.50-10-10PR/5.00-8-10PR
	Axle load fully loaded: front/rear	kg	3780/420	4167/463	3780/420	4167/463
Axle load without loaded: front/rear	kg	1215/1485	1273.5/1556.5	1215/1485	1273.5/1556.5	
Performance	Lifting Speed(Loaded/Unloaded)	mm/s	540/550	540/550	540/550	540/550
	Lowering Speed(Loaded/Unloaded)	mm/s	470/560	470/560	470/560	470/560
	Travelling Speed(Loaded/Unloaded)	Km/h	14/14.5	14/14.5	14/14.5	14/14.5
	Max.Gradeability (Loaded)	%	20	20	20	20
	Max.Drawbar Pull (Loaded)	Kn	13	13	13	13
	Mast Tilting Angle (Fwd/Bwd)	deg	6/10	6/10	6/10	6/10
	Free Lifting Height	mm	130	130	130	130
	Min.Turning Radius	mm	2030	2065	2030	2065
Dimensions	Overall Length (without fork)	mm	2320	2350	2320	2350
	Overall Width	mm	1080	1080	1080	1080
	Overhead Guard Height	mm	2072	2072	2072	2072
	Fork Size (LxWxT)	mm	900X100X35	900X100X35	900X100X35	900X100X35
	Mast Height (Fork lowered)	mm	1995	1995	1995	1995
	Wheelbase	mm	1460	1460	1460	1460
	Battery (Voltage/Capacity)	V/Ah	12/80	12/80	12/80	12/80
	Truck Weight	Kg	2700	2830	2700	2830
	Fuel Tank Capacity	L	50	50	50	50
Engine	Brand		ISUZU	XINCHAI	GCT/KUBOTA	
	Model		C240	3E22	GCTK25	WG2503
	Rated Power	Kw/rpm	35.4/2500	44.8/2400	37.4/2400	43.5/2600
	Rated torque	N.m/rpm	137.7/1800	210/1600-1800	176.5/1600	175/1800
	Number Of Cylinder		4	3	4	4
	Displacement	L	2.36	2.23	2.488	2.491

The standard model data would vary according to the configuration.